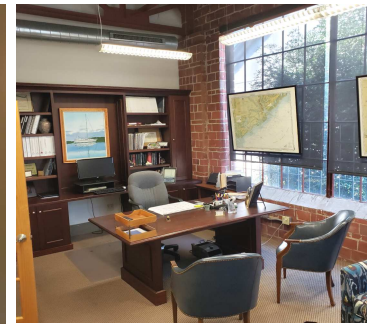




## OFFICE PROPERTIES



# Southend Loft-Style Office Space for Lease



## 1430 South Mint Street, Suite 102

- 3,297 rentable square feet.
- Within walking distance to Bland Street Lynx rail station.
- Beautiful loft-style space with 6 private offices, work room, file room, mail room, break room, conference room, and 6 additional mezzanine offices.
- Great for more sanitary and safe working environment. with enclosed offices and enclosed mezzanine offices.
- \$29.50 psf net of utilities and janitorial service.
- Available January 1, 2021.
- Plenty of parking either on site or on street front.
- See layout next page.

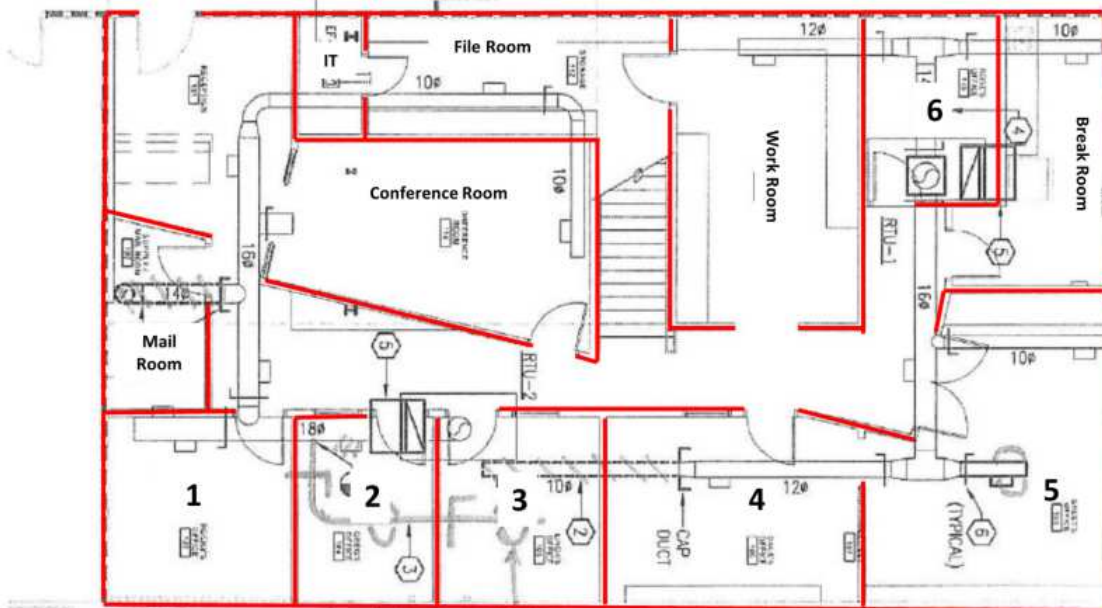
Data presented on this flyer is secured from reliable sources and while every effort is made to obtain accuracy, it is not guaranteed as errors and omissions may occur.

John Stipp – Office Properties

8508 Park Road #131, Charlotte, NC 28210  
[john@charlotteofficespace.com](mailto:john@charlotteofficespace.com)

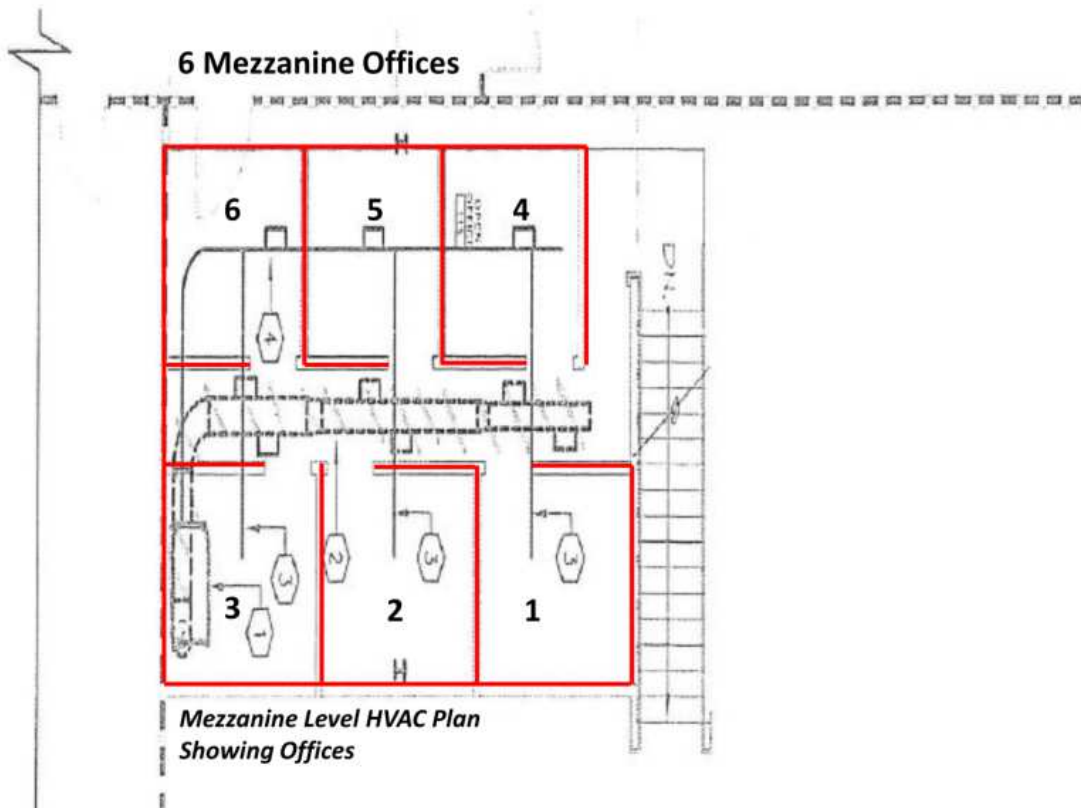
(704) 540-1260

**6 Private Offices, Work Room, File Room, Mail Room, Break Room, Conference Room**



*1st Floor HVAC Plan Showing Offices*

**6 Mezzanine Offices**



*Mezzanine Level HVAC Plan Showing Offices*