



OFFICE PROPERTIES

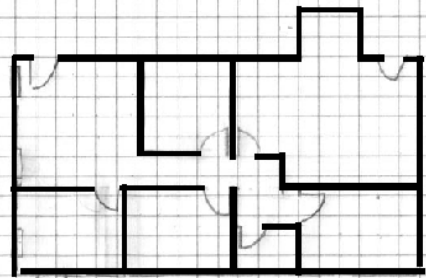
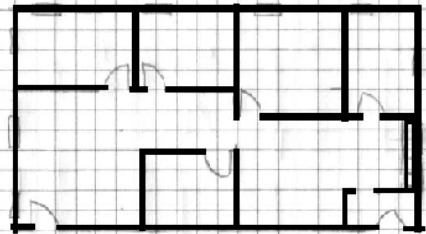


www.CharlotteOfficeSpace.com

Office Condos for Sale or Lease



Unit A - 984 rsf



Unit B - 1,014 rsf

4722 Park Road, Units A and B

- Located near Park Road Shopping Center at Seneca Road and Park Roads behind Supercuts.
- Ground floor units across the hall from each other.
- Common hall restrooms
- Unit A is 984 rentable sq. ft. and unit B is 1,014 rentable sq. ft.
- For Sale or For Lease
- \$14.00 per sq. ft. net of utilities and janitorial
- \$160.00 per sq. ft. purchase price.
- Both units are in very good condition.



Data presented on this flyer is secured from reliable sources and while every effort is made to obtain accuracy, it is not guaranteed as errors and omissions may occur.